

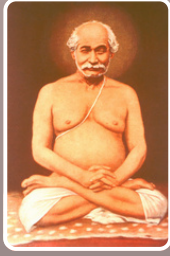
# Kriya Yoga

## INITIATION & MEDITATION RETREAT

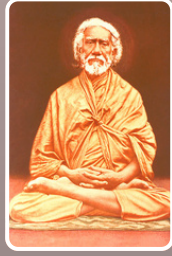
OCTOBER 24-27, 2026 | EPHEBUS RETREAT CENTER



Mahavatar  
Babaji Maharaj



Shri  
Lahiri Mahashaya



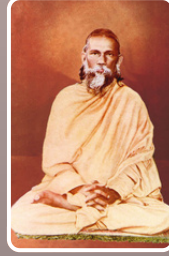
Swami  
Shriyukteshwar  
Giri



Shrimat  
Bhupendranath  
Sanyal Mahashaya



Paramahansa  
Yogananda



Swami  
Satyananda Giri



Paramahansa  
Hariharananda



Paramahansa  
Prajnanananda

Our Guests



SWAMI  
CHIDRUPANANDA  
GIRI



SWAMI  
PRABHAVANANDA  
GIRI

THE PROGRAM WILL BE CONDUCTED IN ENGLISH WITH SIMULTANEOUS TURKISH TRANSLATION.

 EPHEBUS RETREAT CENTER | ACARLAR, 35930, SELCUK - IZMIR, TURKEY

# Daily Schedule

“ Life is not an empty dream; our lives have a purpose. We are here to make our lives a masterpiece. ”  
Paramahansa Prajnanananda

## DAY 1 — SATURDAY, OCTOBER 24

- 11:00 — Arrival & Check-In
- 16:00 — Satsang
- 18:00 — Dinner
- 20:00 — Introduction to Kriya Yoga

## DAY 2 — SUNDAY, OCTOBER 25

- 06:00 — Kriya Yoga Initiation
- 10:30 — Breakfast
- 14:00 — Kriya Yoga Meditation: Technique Class
- 16:00 — Meditation
- 18:00 — Dinner
- 20:00 — Satsang

## DAY 3 — MONDAY, OCTOBER 26

- 08:00 — Meditation
- 09:00 — Breakfast
- 11:00 — Q & A: Kriya Yoga
- 14:00 — Meditation
- 16:00 — Satsang
- 17:00 — Meditation
- 18:00 — Dinner
- 20:00 — Satsang

## DAY 4 — TUESDAY, OCTOBER 27

- 08:00 — Meditation
- 09:00 — Breakfast
- 11:00 — Check-Out & Departure



# Program Participation: Fees & What's Included

For registration and payments, please contact the retreat organizing team.

## ACCOMMODATION FEES

Total: 4 Days - 3 Nights (Includes Open Buffet Breakfast and Dinner)

- Double Room: 270 Euro Per Person
- Triple Room: 216 Euro Per Person (3 Rooms Available in this Category)
- Quadruple Room: 195 Euro Per Person (1 Room Available in this Category)

The listed prices are for the entire retreat period, not per night, and include VAT and accommodation tax.

Room availability is limited and allocations will be made on a first-come, first-served basis.

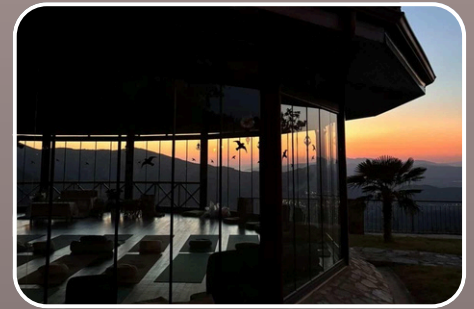


“

We must develop the divine qualities that remain dormant in our souls.

*Paramahansa Prajnanananda*

”

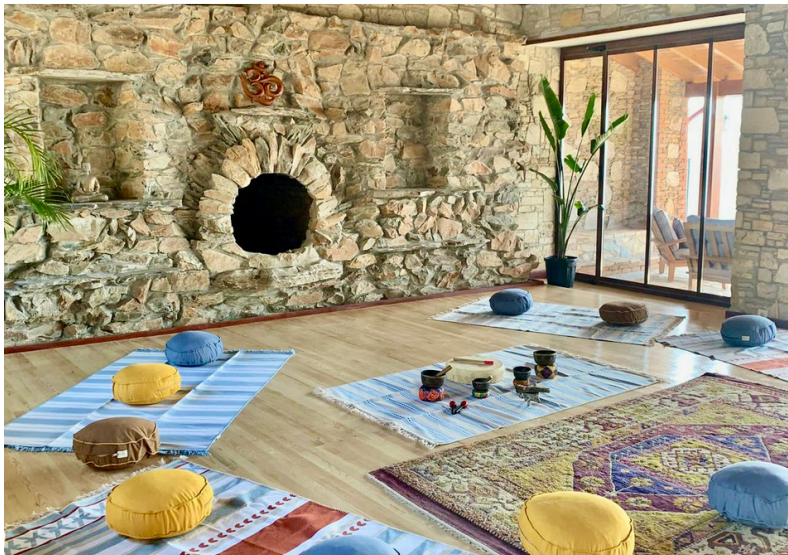


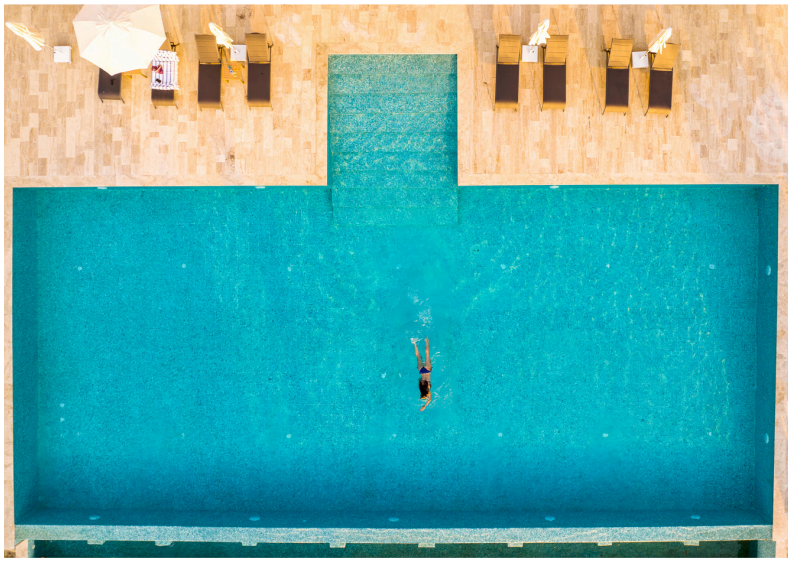
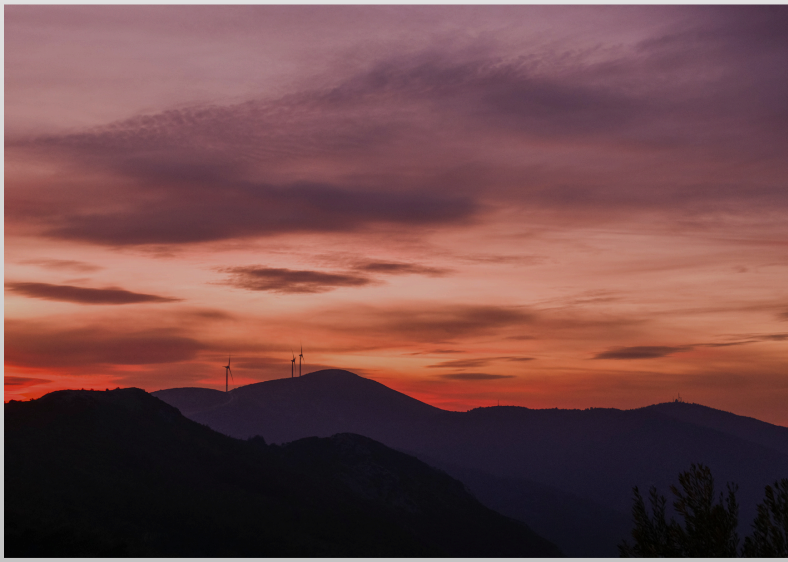
## PARTICIPATION FEE & TRANSFERS

- **Participation Fee:** 130 Euro
- **Transfers:** To accommodate participants' transportation needs between Izmir Adnan Menderes Airport and the Ephesus Retreat Center, an agreement has been made with a transfer company. This service will be offered to participants at affordable rates.

The transfer fee will be shared equally among those who wish to use the service, based on the number of participants. Those who would like to benefit from this service are kindly requested to contact the retreat organization team for detailed information regarding the transfer fee and arrangements.











## For Registration, Information, and Inquiries:



*Sunay Yalcin*



kriyayogaturkey@gmail.com



+32 495 36 11 94 (*WhatsApp Only*)



kriya.yoga.turkiye



www.kriya.org

www.kriyayogaturkiye.com.tr

“

Kriya Yoga is not a theory, but a living  
experience of the Divine within.

”

*Paramahansa Yogananda*